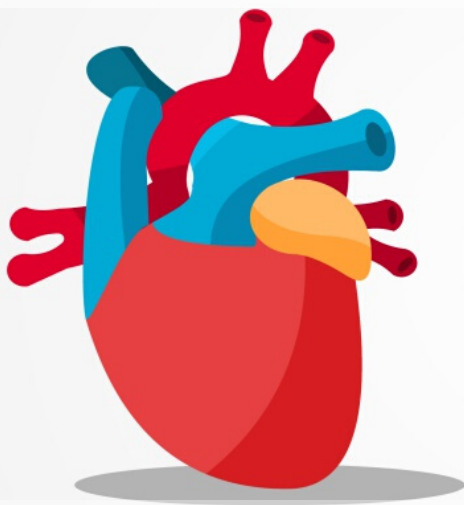


HyMark Solutions

Your **Fully Certified** PointClickCare®
Implementation & Support Partner

MONTHLY NEWSLETTER

FEBRUARY 2020



AMERICAN HEART MONTH

FEBRUARY IS AMERICAN HEART MONTH

Each week during the month of February, the [National Heart, Lung and blood institute](#) has planned a theme revolved around different ways to encourage us all to come together to live healthier lifestyles. During those 4-weeks heres what you can do to spread the word - Share how you're moving: have walking meetings, start a walking club, join an exercise class with a neighbor. Share heart healthy recipes with friends. Remind each other to keep a log of your blood pressure, healthy weight goals, and physical activity. Do a stress reducing activity like yoga or meditation with your support system. Tell a friend you're quitting smoking and ask for their support. Once you do all these things **SHARE** on social media so other can get in on it to.

Raise awareness about heart health and urge those around you to prevent heart disease. **#OurHearts** are healthier together. Join us!

THIS YEARS, WEEKLY THEMES INCLUDE

- Be physically active **TOGETHER.**
- Eat healthier **TOGETHER.**
- Track your heart health results **TOGETHER.**
- Manage stress, sleep better, and quit smoking **TOGETHER.**



DID YOU KNOW

The Centers for Medicare & Medicaid Services (CMS) has released the new drafts of the MDS 3.0 for release on October 1, 2020.

With this release occurring earlier than expected, this new MDS version does not contain Section G. Although we no longer needed Section G for the calculation of Medicare rates, it was still being used by some states for Medicaid case-mix calculation and

and moreover for the calculation of Quality Measures. These Quality Measures included:

- % of short-stay residents who made improvements in function.
- % of short-stay residents whose independence in three mobility functions increases over the course of the nursing home care episode.
- % of residents whose ability to move independently worsened.

percentage of long-stay residents who have demonstrated a decline in

independence of locomotion when comparing the target assessment to a prior assessment.

It is expected that there will be additional changes prior to October 1, 2020. The change tables were not released with the MDS forms last week, but they are expected to be released shortly. Stay tuned for more information and additional updates as they are released.

To find a copy of the new MDS, go to the “Downloads” section of the MDS 3.0 Technical Information 

HyMark Monthly PCC Trainings

MARK YOUR CALENDARS

Every month our team of clinical and financial specialists offer you a variety of PointClickCare® trainings to keep you up-to-date on the latest changes and updates. To view our training schedule and sign up, click on the calendar or head to our website and click the 'Trainings' tab.

If you have questions, contact us at - SUPPORT@HYMARKSOLUTIONS.com



HyMark Solutions · 601 W Walnut St · Yakima, WA 98902-1133

www.hymarksolutions.com

Phone: 509.834.4031

support@hymarksolutions.com